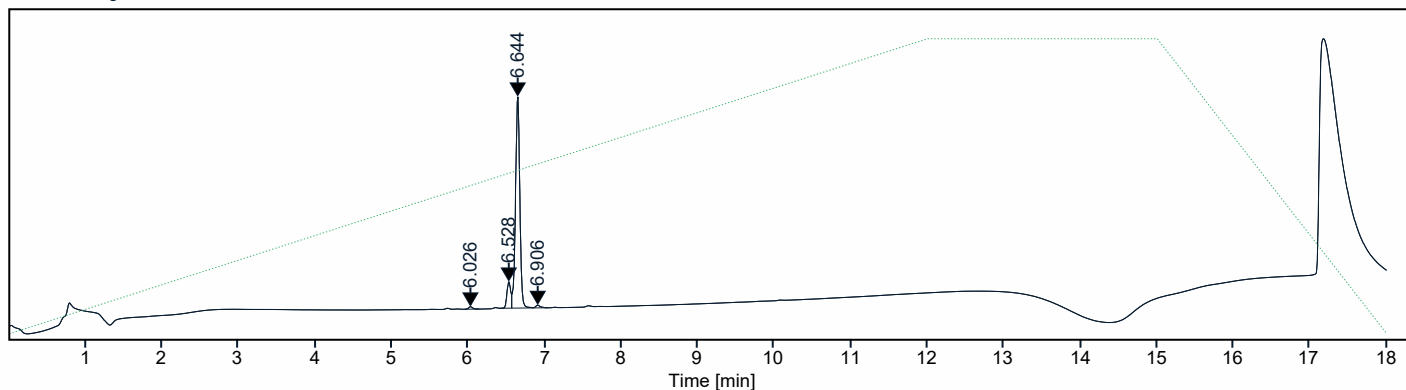


Instrument Name LCMS01 Sample Name LB-CVT-01-18

Injection Acq Method Name QC 5 to 95 MeCN MW 100-800 ESI+-.amx

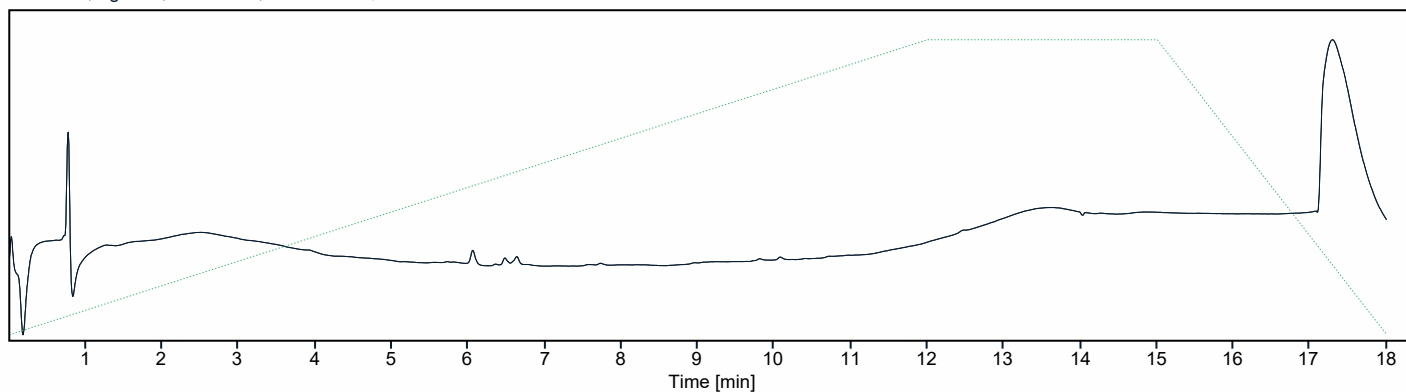
MWD1B,Sig=220,4 Ref=400,50 PMP1D,Solvent Ratio B

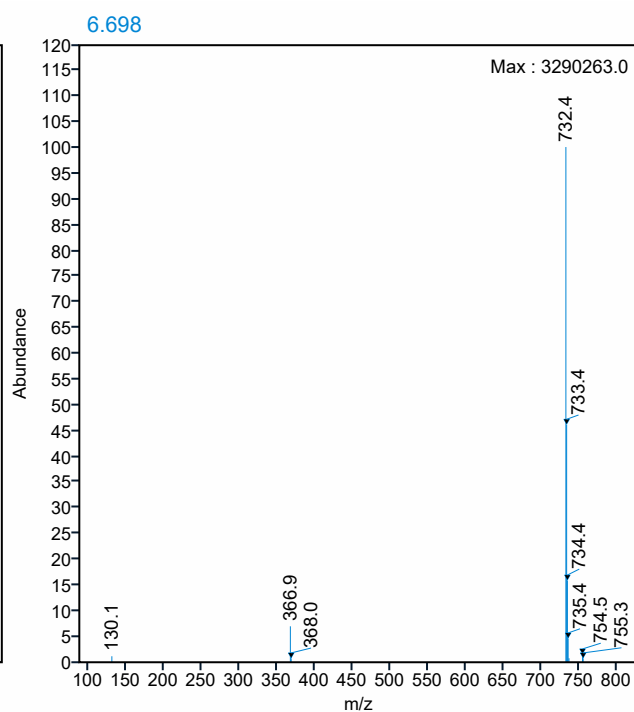
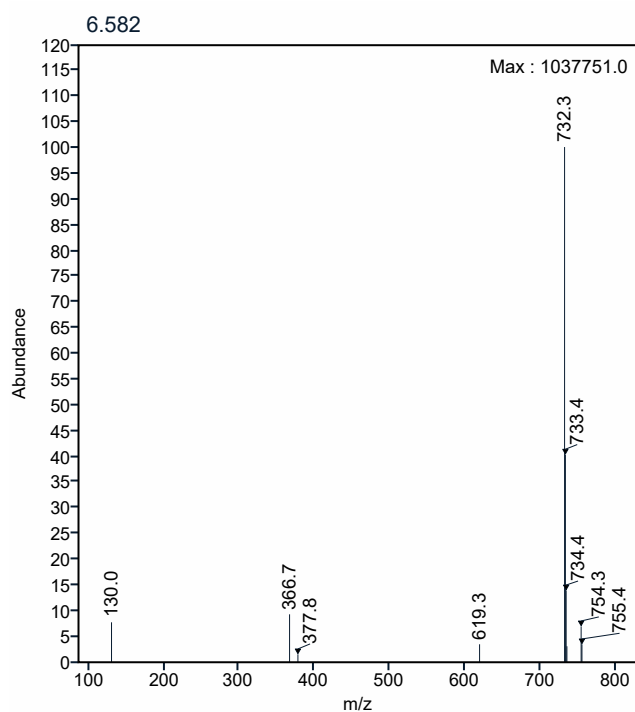
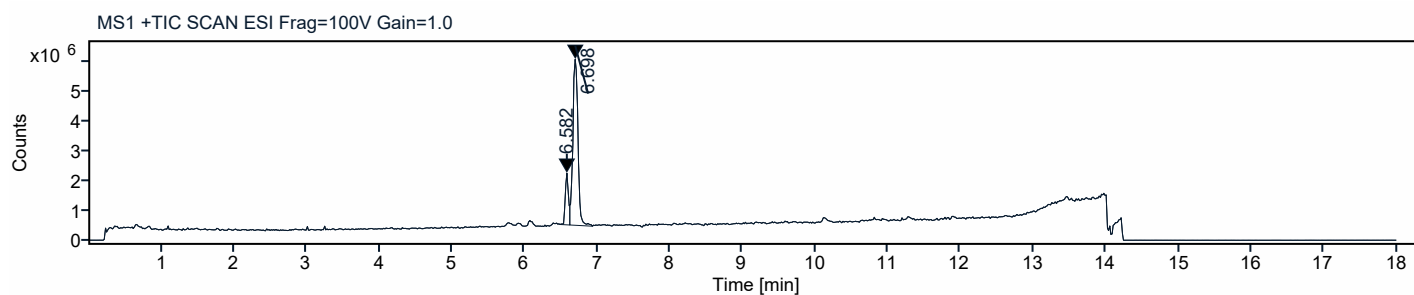
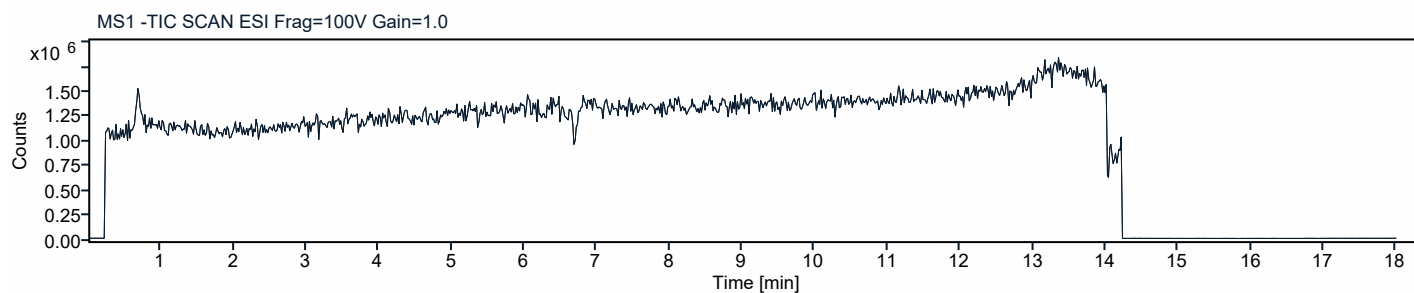


Signal: MWD1B,Sig=220,4 Ref=400,50

| RT [min] | Type | Width [min] | Area      | Height   | Area%   | Name |
|----------|------|-------------|-----------|----------|---------|------|
| 6.026    | BB   | 0.1911      | 20.7354   | 5.6344   | 0.9524  |      |
| 6.528    | BV   | 0.1473      | 208.0256  | 61.5272  | 9.5547  |      |
| 6.644    | VV   | 0.2780      | 1921.8748 | 493.5861 | 88.2720 |      |
| 6.906    | VB   | 0.1918      | 26.5821   | 6.3169   | 1.2209  |      |
|          |      | Sum         | 2177.2179 |          |         |      |

MWD1D,Sig=280,4 Ref=400,100 PMP1D,Solvent Ratio B





Acquisition Method: QC 5 to 95 MeCN MW 100-800 ESI+-.amx

Path: D:\CDSProjects\CURVETX\Results\LCMS01-2021-08-17 17-53-58+01-00.rslt

## Quat. Pump Method

Flow: 0.500 mL/min

Use Solvent Types: Yes

Low Pressure Limit: 0.00 bar



High Pressure Limit: 600.00 bar  
Max. Flow Ramp Up: 100.000 mL/min<sup>2</sup>  
Primary Channel: Automatic  
Max. Flow Ramp Down: 100.000 mL/min<sup>2</sup>  
Module Display Name: Quat. Pump  
Module Type: G7104C  
Order: 1

Solvent Composition

| Channel | Ch. 1 Solv. | Name 1            | Used | Percent (%) |
|---------|-------------|-------------------|------|-------------|
| A       | 100.0 %     | Water V.03        | Yes  | 95.00       |
| B       | 100.0 %     | Acetonitrile V.03 | Yes  | 5.00        |
| C       |             |                   | No   |             |
| D       |             |                   | No   |             |

Timetable

| Time (min) | A (%) | B (%)  | C (%) | D (%) | Flow (mL/min) | Pressure (bar) |
|------------|-------|--------|-------|-------|---------------|----------------|
| 12.00      | 0.00  | 100.00 | 0.00  | 0.00  | ---           | ---            |
| 15.00      | 0.00  | 100.00 | 0.00  | 0.00  | ---           | ---            |
| 18.00      | 95.00 | 5.00   | 0.00  | 0.00  | ---           | ---            |

## Stoptime

Stoptime Mode: Time set  
Stoptime: 18.00 min